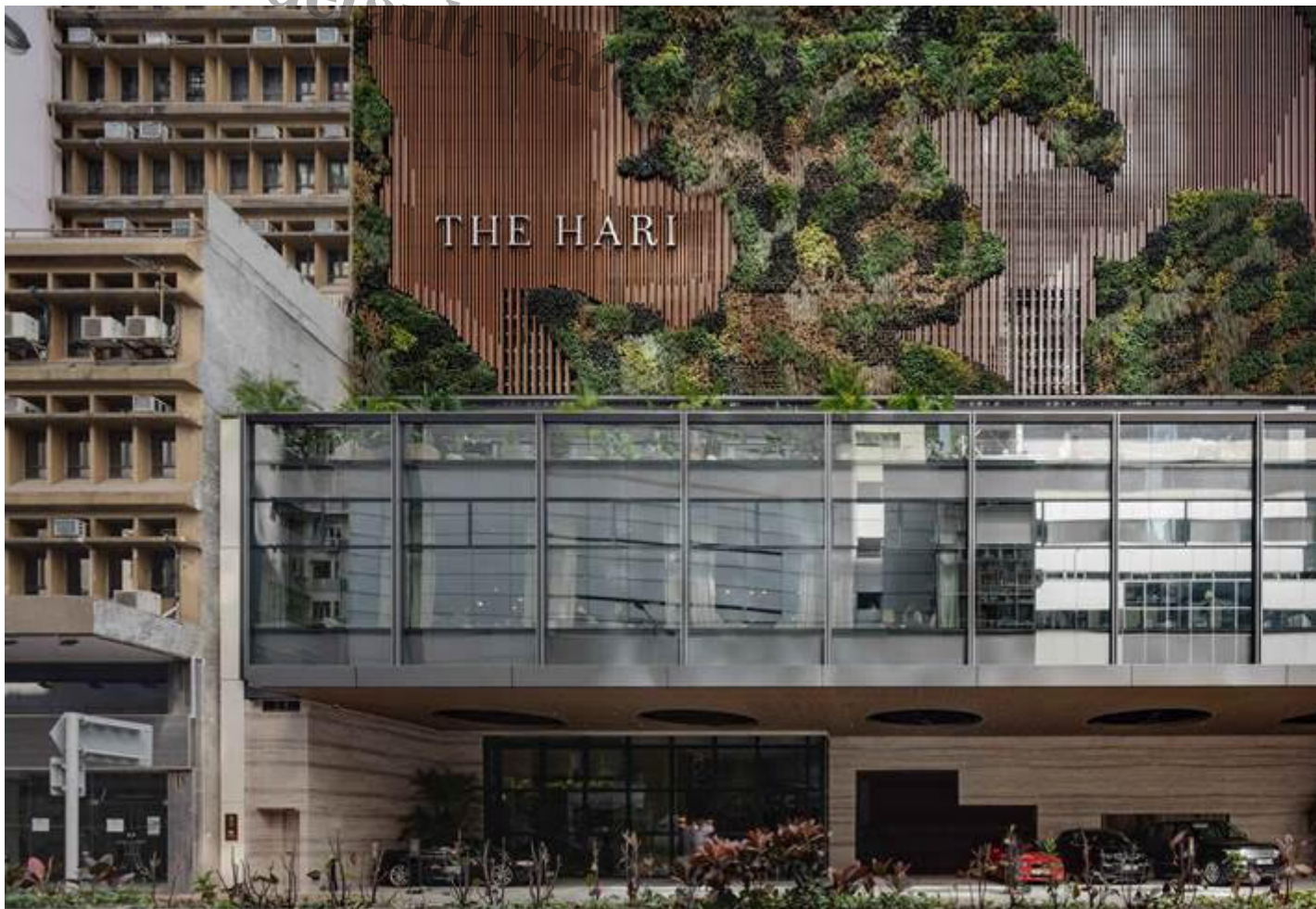




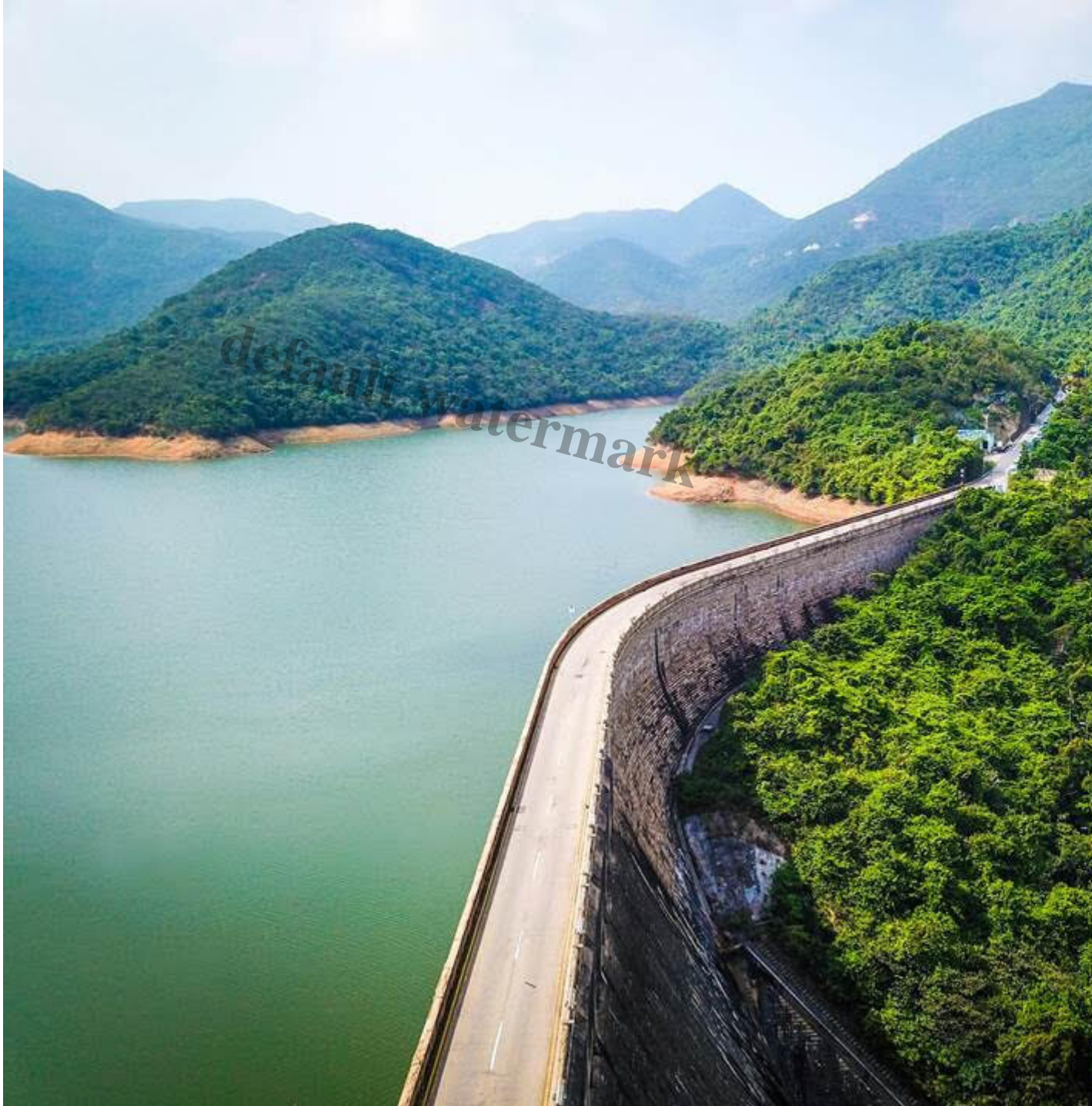
The Hari Hong Kong Embraces Slow Travel With Nature on its Doorstep

Description



In a city famed for its pace and density, **The Hari Hong Kong** is encouraging travellers to slow down and stay longer – revealing Hong Kong’s lesser-known side where historic streets give way to scenic hillside hiking trails.

As global travellers increasingly embrace slow travel, prioritising deeper, more immersive experiences over fast-paced itineraries, The Hari Hong Kong offers a compelling base in Wan Chai, where extended stays scratch beneath the city’s surface and afford surprisingly easy access to a vast network of hiking trails.



Hong Kong’s lush hillsides are just minutes from The Hari’s doorstep

Nature at Your Doorstep

Within 15 minutesâ?? walk of the urban hotel, situated on lively Lockhart Road in one of Hong Kongâ??s oldest yet most eccentric districts, guests can plug into some of Asiaâ??s greatest natural splendour at the edge of a trail system with hike loops as long as 50 kilometres.

Back at street level, Wan Chai invites exploration at a slower pace â?? past historic landmarks such as the Blue House and the old Wan Chai Post Office, or to trace the layered stories of Lockhart Road, immortalised in fiction such as *The World of Suzie Wong*, before returning to The Hari Hong Kong and its exquisite collection of art and books.



Victoria Harbour offers another perspective â?? sunrise walks along the waterfront, ferries gliding across the skyline

Victoria Harbour, just minutes away, offers another perspective: sunrise walks along the waterfront, ferries gliding across the skyline, and a sense of place that unfolds gradually rather than all at once.

Stay Longer, Experience More

To support longer stays, The Hari Hong Kong is offering tailored packages designed to reward time spent in the city. Its **Stay Longer With Us** offer provides exclusive rates for extended visits, while **A Night on Us** offers 25% off a four-night stay to inspire a more unhurried approach to travel.



The Hari Hong Kong's stylish rooms are a refined base for longer explorations

Both packages also afford discounts at the hotel's diverse dining landscape: the authentic Italian ristorante **Lucciola**, defined by a bold palette of amber and green; contemporary Japanese restaurant **Zoku**, featuring a remarkable ceiling of angled timber slats in origami-like forms; alfresco terrace bar **The Terrace**; and **The Lounge**, an all-day sitting area adorned with a compelling collection of art and books.

Hong Kong is often experienced at speed yet there is so much richness to uncover when you take your time. Our natural splendour is all the more amazing for its accessibility. Down here in Wan Chai, you can wander Lockhart Road, visiting heritage sites and the ghosts of

Suzie Wong's world, and minutes later be out among hiking routes that reveal a completely different Hong Kong – albeit one with common tailorbirds and red whiskered bulbuls, forest canopies and panoramic harbour views.

Edward E. Snoeks, General Manager, The Hari Hong Kong



Hong Kong Island's Dragon's Back Trail affords sweeping vistas

A slower approach to travel mirrors larger shifts in how people are choosing to explore the world. According to research by Visa and Expedia, travellers are staying longer on average than pre-pandemic

levels, with visitors from a quarter of global markets adding at least one extra day to trips â?? and up to 71% of travellers citing outdoor activities like hiking as a key part of slow travel experiences.

The Hari Hong Kong is located at 330 Lockhart Road, Wan Chai, Hong Kong. For more information, visit thehari.com/hong-kong.

Date Created

17/06/2026

Author

sofiapereira

default watermark