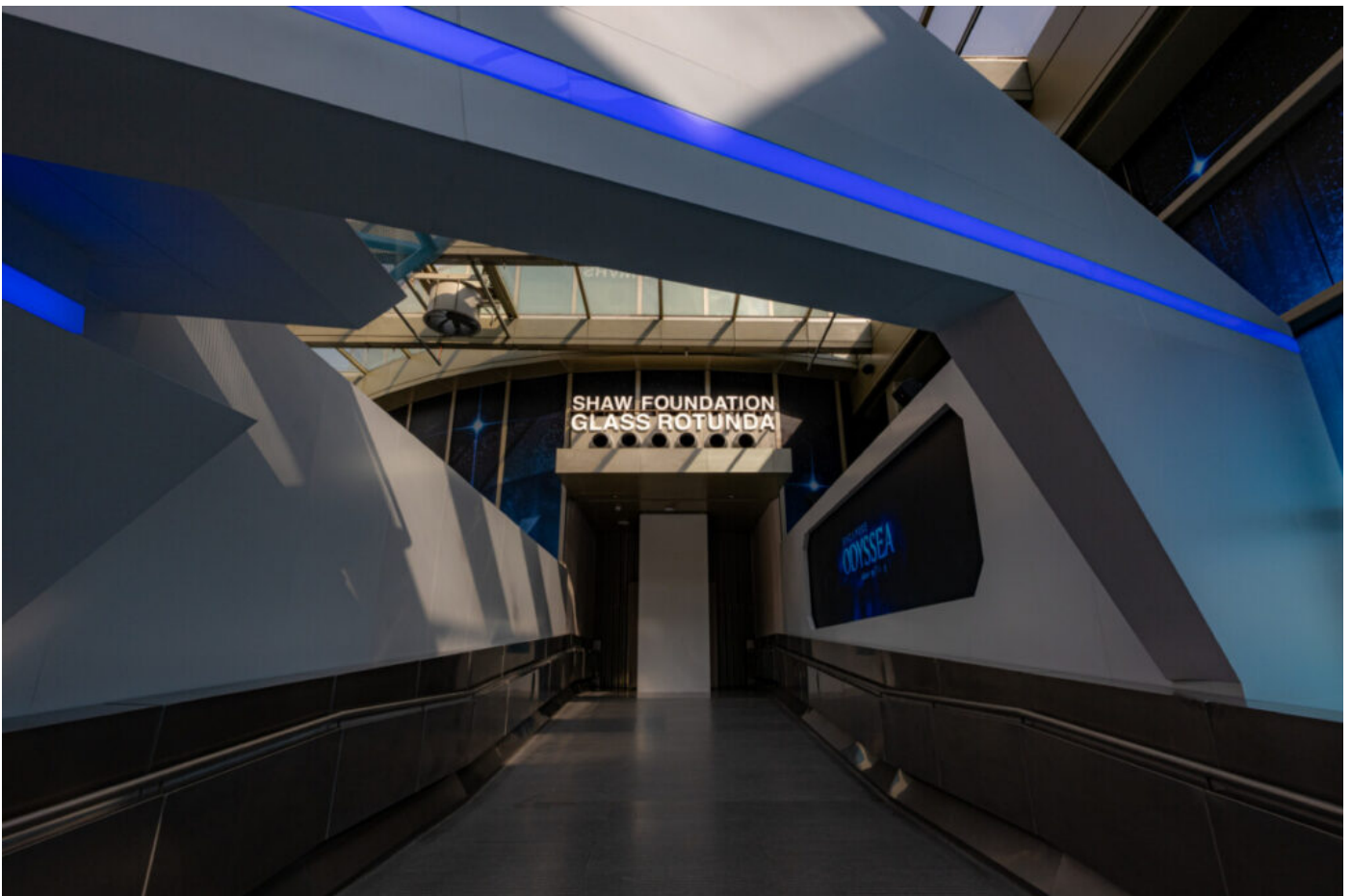




Set Sail Through Time: Singapore Odyssey, a New Adventure at the National Museum

Description

Get ready for an epic journey through history! The National Museum of Singapore has just launched Singapore Odyssey, a brand-new, interactive experience in the Shaw Foundation Glass Rotunda. This is not your typical museum visit; it's a time-traveling voyage that blends history, art, and technology for an adventure that both kids and adults will love.



Location: Shaw Foundation Glass Rotunda, National Museum of Singapore

Date: Starting August 8, 2025

Admission: Free for Singaporeans and Permanent Residents | Ticketed for General Visitors

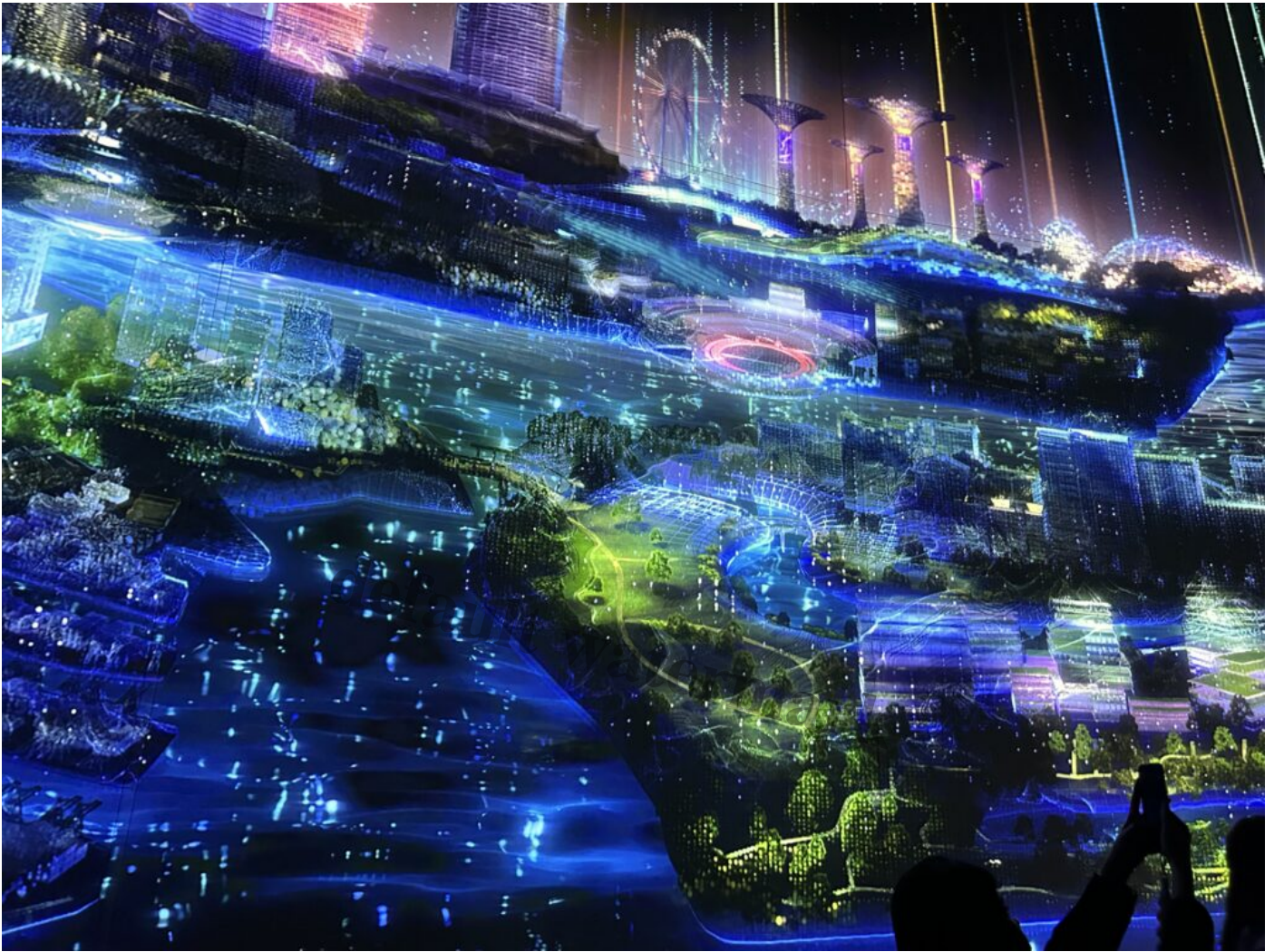
Your Magical Companion Awaits

The adventure begins the moment you step inside! You'll be given an RFID wristband that serves as your very own magical companion for the journey. Each wristband comes in a different color and is inspired by Singapore's native wildlife, with nine companions to choose from, like a pangolin, a crab, or a hornbill. This isn't just a gadget—it's your key to unlocking hidden stories and animations along the way. The best part? Your companion will light up the path and respond uniquely to your movements, making your journey truly personal.



Into the Time-Traveling Vessel

Once you've chosen your companion, you'll board a sleek, time-traveling vessel. From the cabin, you'll get a stunning panoramic view of Singapore's modern skyline before your adventure unfolds.



This introductory video sets the stage for the journey ahead, preparing you to travel back through the ages.



default watermark

The LED Globe: Charting a Course Through History

Next, you'll encounter a captivating light show projected from a suspended LED globe. This is, in fact, the first of its kind in a Singapore museum. Furthermore, this dynamic display traces the evolution of trade routes from pre-colonial times to the present, showcasing Singapore's enduring role in global connectivity. It's a breathtaking start that immerses the room in vibrant hues of blue and sets the tone for your voyage.



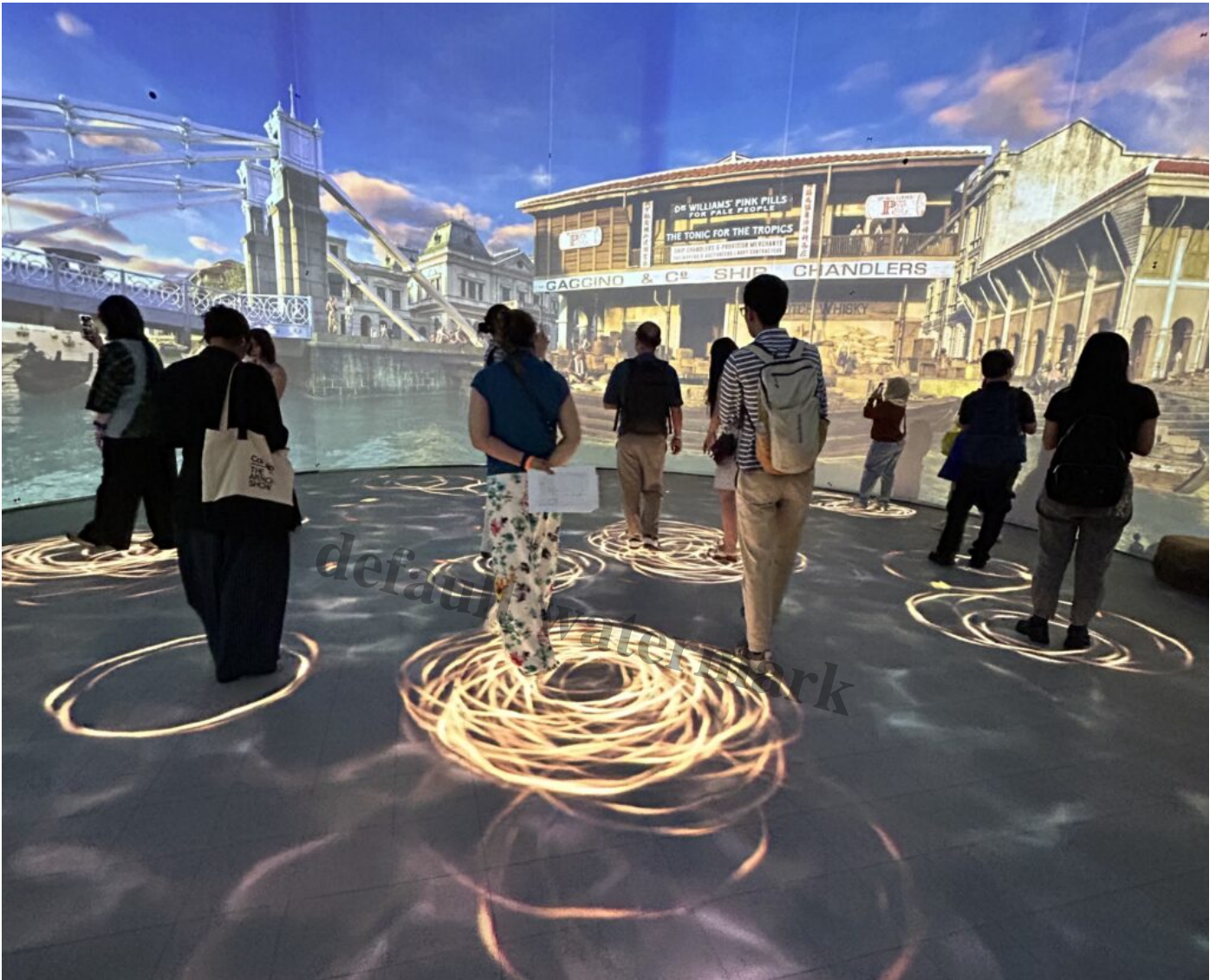
Travelling Through History on the Spiral Ramp

Now the real time-traveling begins! You'll descend the iconic spiral ramp. You will journey backward through Singapore's history, from the present day to pre-colonial times. The ramp's curved walls are lined with immersive, diorama-style projections. These bring historical moments to life with vivid detail and soundscapes. You'll witness four distinct episodes. These episodes include scenes of independence, wartime, and the colonial era. As you go, your magical companion will help you uncover hidden historical scenes and stories. This will make you feel like a true explorer diving deep into the past.



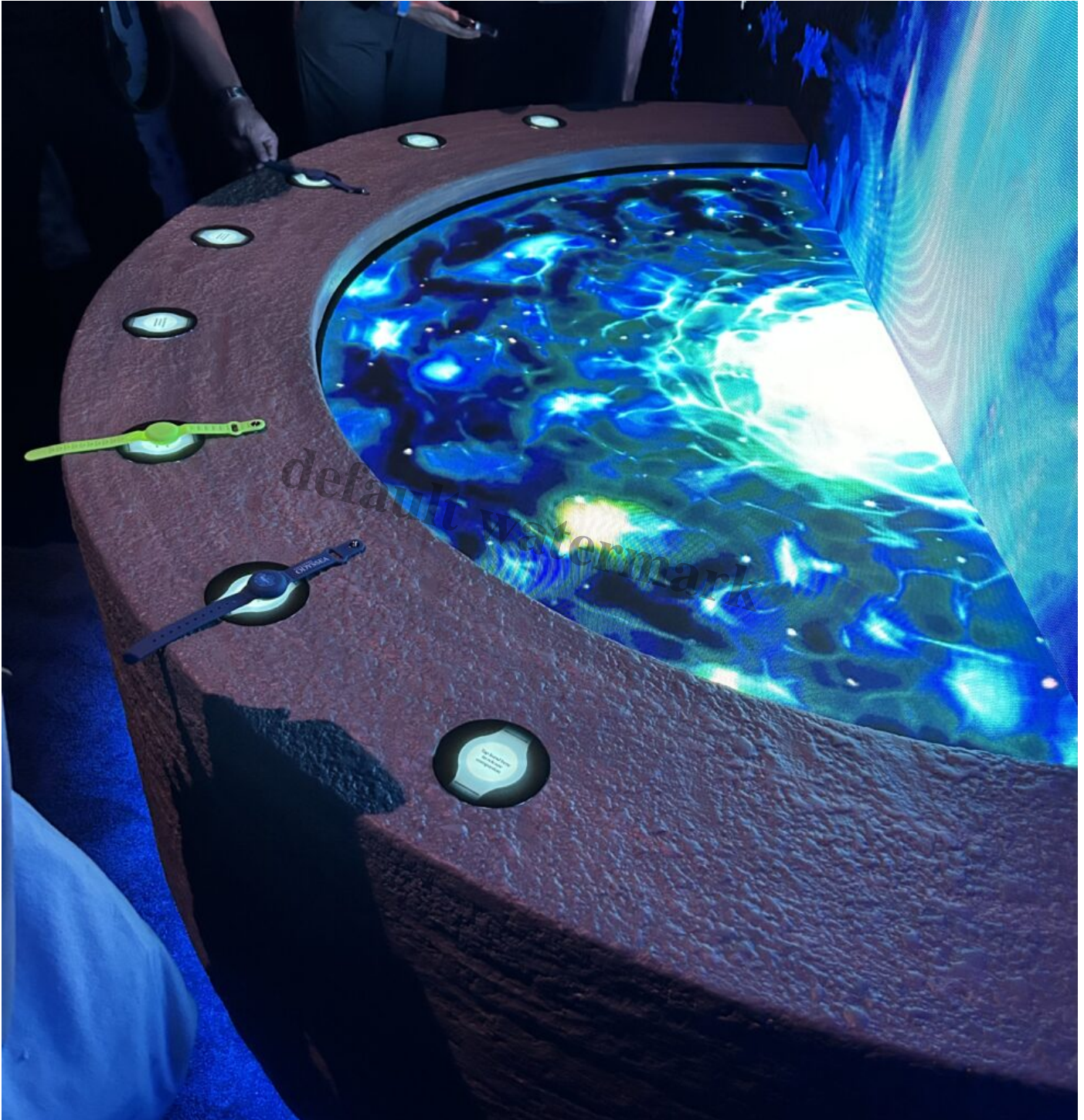
The Interactive Waterfall

At the very bottom of the Glass Rotunda, your journey culminates with an immersive digital waterfall. The cascading visuals shimmer with light and sound, creating a breathtaking curtain of falling water. As you step closer, the waterfall parts to reveal a historical scene, and the dynamic ripples on the floor react to your every movement and those of others around you. It's a shared experience that brings the flow of time and the beauty of nature together in a spectacular finale.



Releasing Your Magical Companions

Your journey ends at an interactive kiosk where you can "release" your magical companion. By tapping your RFID wristband against a digital "well," you'll see your companion appear on the wall and merge into a final multimedia sequence.



This sequence is inspired by the old Malay myth of Pauh Janggi, a great tree of life, and a giant crab whose movements cause the tides to rise and fall. In addition, this symbolic act reinforces the message that what is borrowed from nature should be returned with care, thus making a powerful call to action for sustainability. After this final experience, you'll seamlessly transition to the Singapore History Gallery, where the story continues.



Don't miss this incredible new showcase! Singapore Odyssey is a vibrant, multi-sensory adventure that, most importantly, makes history come alive with colorful projections and interactive fun. It's an invitation for families and friends to participate and rediscover our nation's remarkable journey together. Furthermore, the personalized experience with your magical companion ensures that everyone, especially children, can play a hands-on role in exploring Singapore's past. All in all, get ready to set sail on an unforgettable adventure that is both educational and enchanting!



You May Also Like

- [Singapore's Largest Japanese Pop Culture Event: EOY J-Culture Festival is back and Bigger than Ever](#)
- [A Vegan Butchery by Jungle Kitchen](#)
- [World Christmas Market at Marina Bay Now Free Entry Amid Wet Weather](#)

Date Created

01/08/2025

Author

hamimah

default watermark