



## Let's Play At ACM: Final-Week Notes For The Asian Games Exhibition

### Description

Let's Play: The Art and Design of Asian Games is in its final week at Asian Civilisations Museum, with the exhibition scheduled to end on 7 June 2026.

The show is a good fit if you like sport, design and pop-culture objects in the same visit. Instead of treating the Asian Games only as a competition, ACM uses the exhibition to look at mascots, medals, posters, merchandise and the visual culture that grows around major sport events.

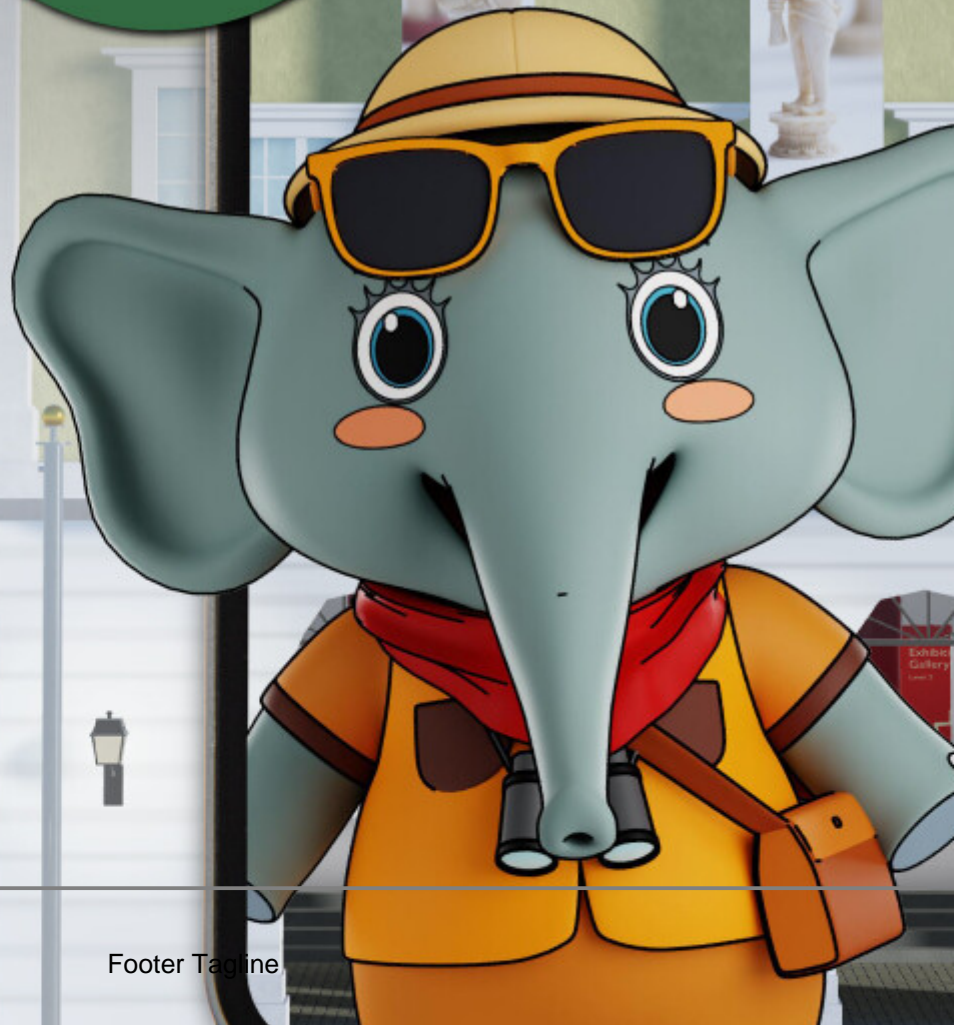
### What The Exhibition Covers

The exhibition looks at the art and design of the Asian Games, with objects that connect sport to national identity, graphic design and popular memory. That gives it a wider appeal than a sports-history display.

Families can use it as a conversation starter about how events are marketed and remembered. Adults who follow sport may find the design angle more interesting than a standard medal-count narrative.

# ACMver

Unlock  
rewards  
when  
you play  
onsite!



The exhibition uses objects and visuals connected to Asian Games design.

## Final-Week Planning

- Venue: Asian Civilisations Museum.
- Final day listed: 7 June 2026.
- Exhibition page: [Let's Play at ACM](#).

*default watermark*



WELCOME TO

# LET'S PLAY MORE



default watermark

This playful extension to Let's Play: The Art and Design of Asian Games invites you to experience games hands-on.

Try traditional and contemporary games, design your own game tokens, and watch it come alive on The Game Board!



Let's Play  
The Art and Design of Asian Games  
Interactive  
Exhibition



ACM's programme extensions add family and design activities around the show.

## Who Should Go Before It Closes

Go if you want a museum visit that is lighter than a dense history exhibition but still has enough design detail to reward a careful look. The final week is also useful for families looking for an indoor plan before the June holiday crowd moves fully into the bigger commercial attractions.

If you are planning around lunch, ACM's Empress Place location makes it easy to pair the visit with the Civic District, Boat Quay or National Gallery area.

## Location Notes

- [Asian Civilisations Museum](#)

### Date Created

01/06/2026

### Author

priya

default watermark