



i Light Singapore 2026 Route Guide: Four Marina Bay Works To Start With

Description

i Light Singapore 2026 runs from 5 to 28 June, transforming Marina Bay and Raffles Place with light installations under the theme Movement. The official site lists works across the precinct, so the useful move for readers is to build a walking route rather than trying to read every artwork page at the waterfront.

A compact first route can begin with Infinite Graffiti at the entrance of Marina Bay Link Mall, continue to WAVE and Silent Moments near The Promontory, then end with Arch Flower at Raffles Place Park. That keeps the plan MRT-friendly and avoids turning a night walk into a sprawling route.

Four Works To Start With

Infinite Graffiti by Graffiti+ from Canada is described as an interactive spray-can light canvas. It is a good first stop because visitors can understand the interaction quickly before moving toward the waterfront.

WAVE by Japan's Masamichi Shimada is listed at The Promontory, while Silent Moments by Slovakia's BN label sits along the Waterfront Promenade adjacent to The Promontory. Those two works can be paired naturally. Arch Flower by France's Cyril Lancelin brings the route into Raffles Place Park for a CBD finish.

- Festival dates: 5 to 28 June 2026.
- Theme: Movement.
- Suggested route: Marina Bay Link Mall, The Promontory, Waterfront Promenade, Raffles Place Park.
- Best timing: after dinner, before the latest crowd builds.



WAVE by Masamichi Shimada sits at The Promontory during i Light Singapore 2026.

Planning Notes

Wear comfortable shoes and keep the plan flexible if you are visiting with children or older family members. Marina Bay looks compact on a map, but crowd movement, photo stops and road crossings

can stretch the walk.

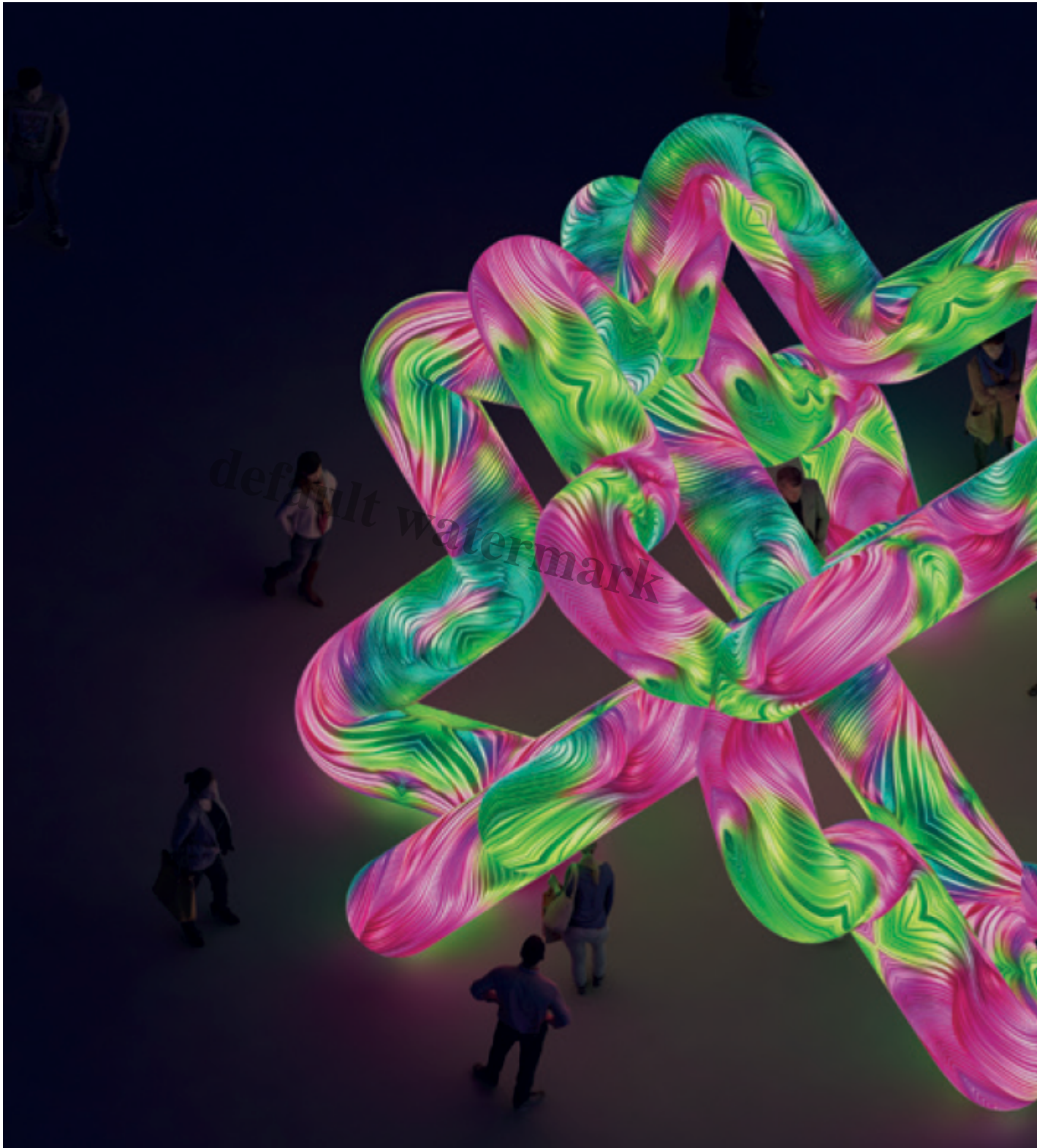
Use the official [i Light Singapore](#) site for the current map and artwork pages. For more event routes, browse our [Things To Do](#) section.

- Nearest MRT options: Bayfront, Downtown, Raffles Place and Marina Bay.
- Bring a small umbrella if rain is forecast.
- Start with fewer installations if you want better photos and less fatigue.

default watermark



Silent Moments is listed along the Waterfront Promenade beside The Promontory.



Arch Flower brings Cyril Lancelin's installation to Raffles Place Park.

Location Notes

- [Marina Bay Link Mall](#)
- [The Promontory](#)
- [Raffles Place Park](#)

Date Created

02/06/2026

Author

sofiapereira

default watermark