



Autumn in Japan, Two Weeks Self-Drive Travel Itinerary (Nagano, Hakone, Izu, Tokyo) – Day 9

Description

We checked out of the hotel early this morning. The journey down south to Izu will take us about 60 minutes.

Before heading to the hotel, we will visit some places. Something to note: The EDC card does not work for tolls in Izu. You need to pay cash.

Mishima Skywalk



The Mishima Skywalk is a picturesque spot where you can see Mt. Fuji from a gigantic suspension bridge. At 400 m in total length, it is Japan's longest pedestrian suspension bridge.



The bridge by itself was nothing special. However, once you cross the bridge, there are several activities, such as forest adventures, segway guided tours, buggy, e-biking and many more. You can find out more here: <https://mishima-skywalk.jp/>

I wanted to try the zipline; it looked fun, but the queue was long. In the end, we tried the VR dinosaur. I thought it was for kids, but it turned out to be quite fun!



Lunch at Takano ????????

This wasn't planned. We started the day later than expected so we had to find alternative lunch places that were still open after 2 p.m.

I found this nostalgic place operated by a lovely old couple using Google search.



Each of us ordered a course meal. The menu was in Japanese, but nowadays, with the iPhone translator, it is not an issue to travel to parts of Japan that are less touristy.



The steak is not the usual heavy metal style, and the beef stew is tender.



Chaliapin steak is a unique steak exclusively known in Japan. The dish uses lots of onion and was originally devised to make the meat extra tender and delicious.





The lady boss was friendly and even gifted us some fruits when we left.

They are not on social media, but if you are going to Izu, please visit them.

CHAKI CHAKI – a beautiful place for Matcha and Mochi



Before the day ends, we are going to Chaki Chaki for some tea and sweets. It's a quaint tea house located next to a stream. The seats are arranged so you can chill and soak in the relaxing atmosphere while sipping away at the hot cup of matcha.





Check-in – Izu Marriott Hotel Shuzenji

We are spending two nights in Izu. The first will be at the Izu Marriott Hotel Shuzenji. It's a pet-friendly hotel, and I saw several Japanese people bringing their dogs for staycation.

This hotel is located at the top of a hill, so there's nothing within walking distance. Be sure to grab your groceries before heading up.

Our room has a private onsen, so this is the view from the balcony.



Dinner – Amago Chaya

For tonight, we are not having dinner provided by the hotel.

Wasabi is famous in Izu. I found this joint that sells wasabi nabe (hotpot), wasabi ice cream, and even wasabi milkshakes.











Their speciality is amago fish, a type of river fish. It looks and tastes like salmon, but I find the meat sweeter.

I highly recommend this restaurant.

Shuzenji Niji no Sato Autumn Light Up

From mid-November to early December, Shizuoka's Shuzenji Niji no Sato allows visitors to appreciate the colourful autumn leaves under the lights after dark.

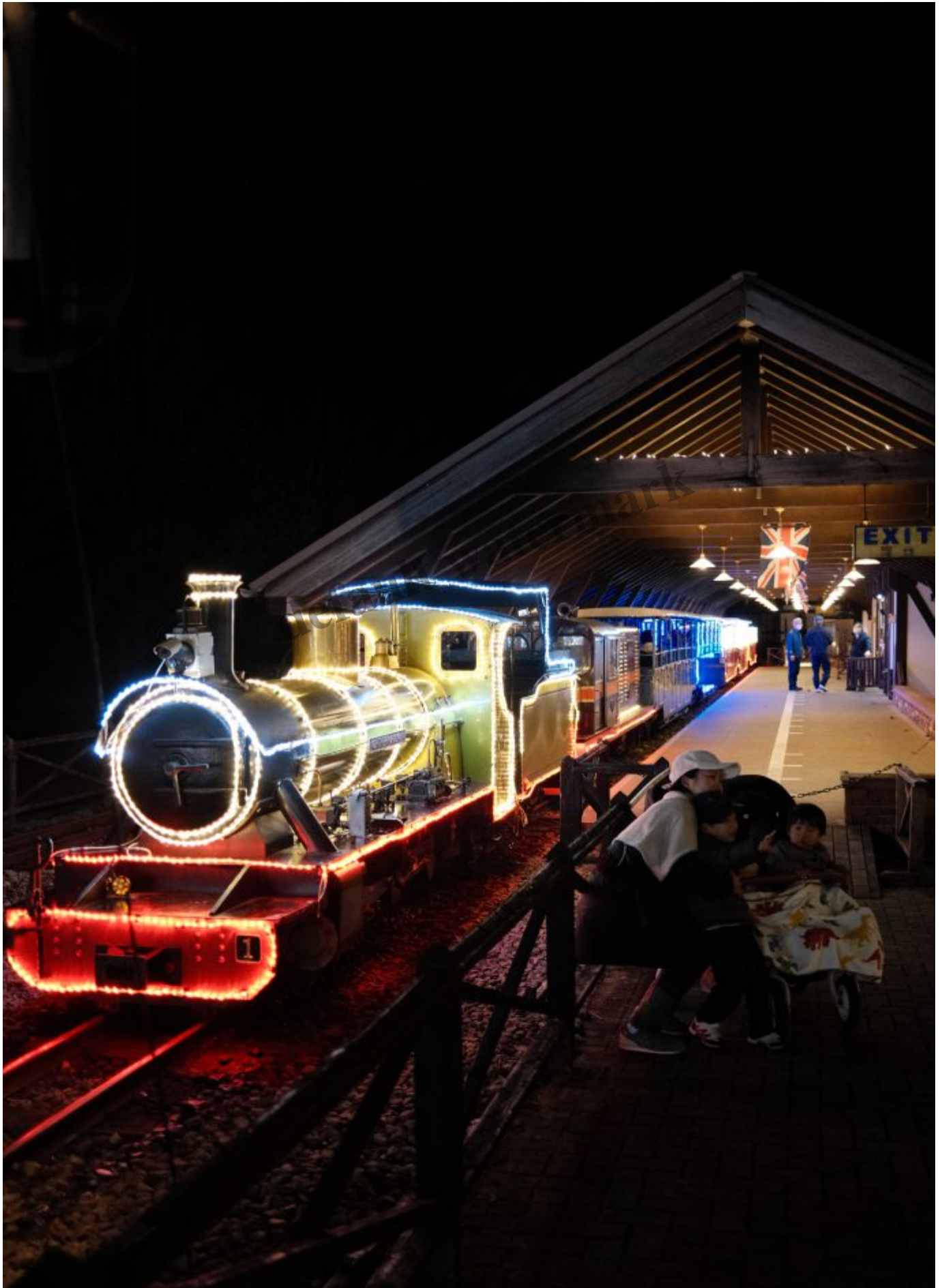




default watermark



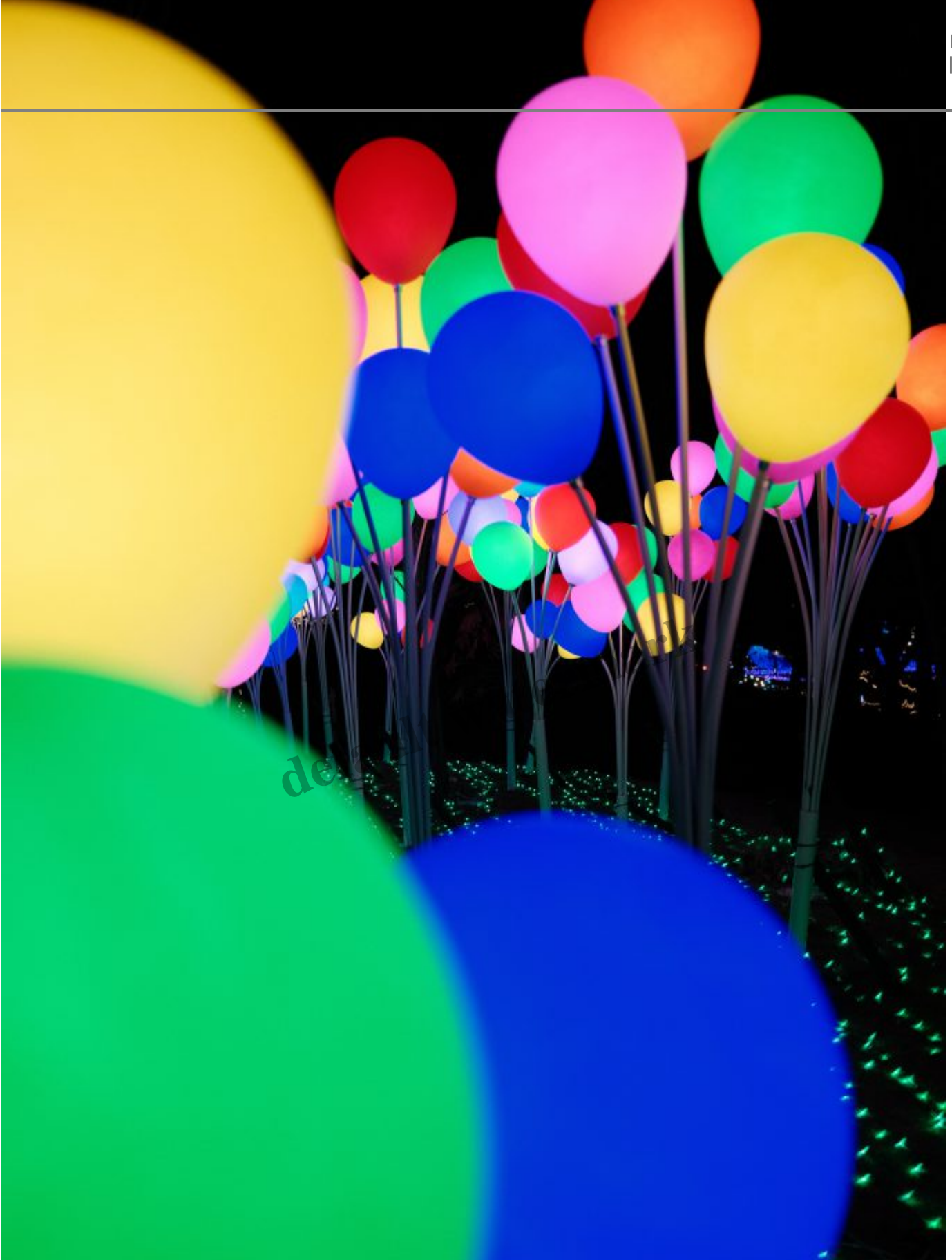
There will also be fireworks on certain weekends. Unfortunately, due to bad weather, the fireworks have been cancelled!



default watermark



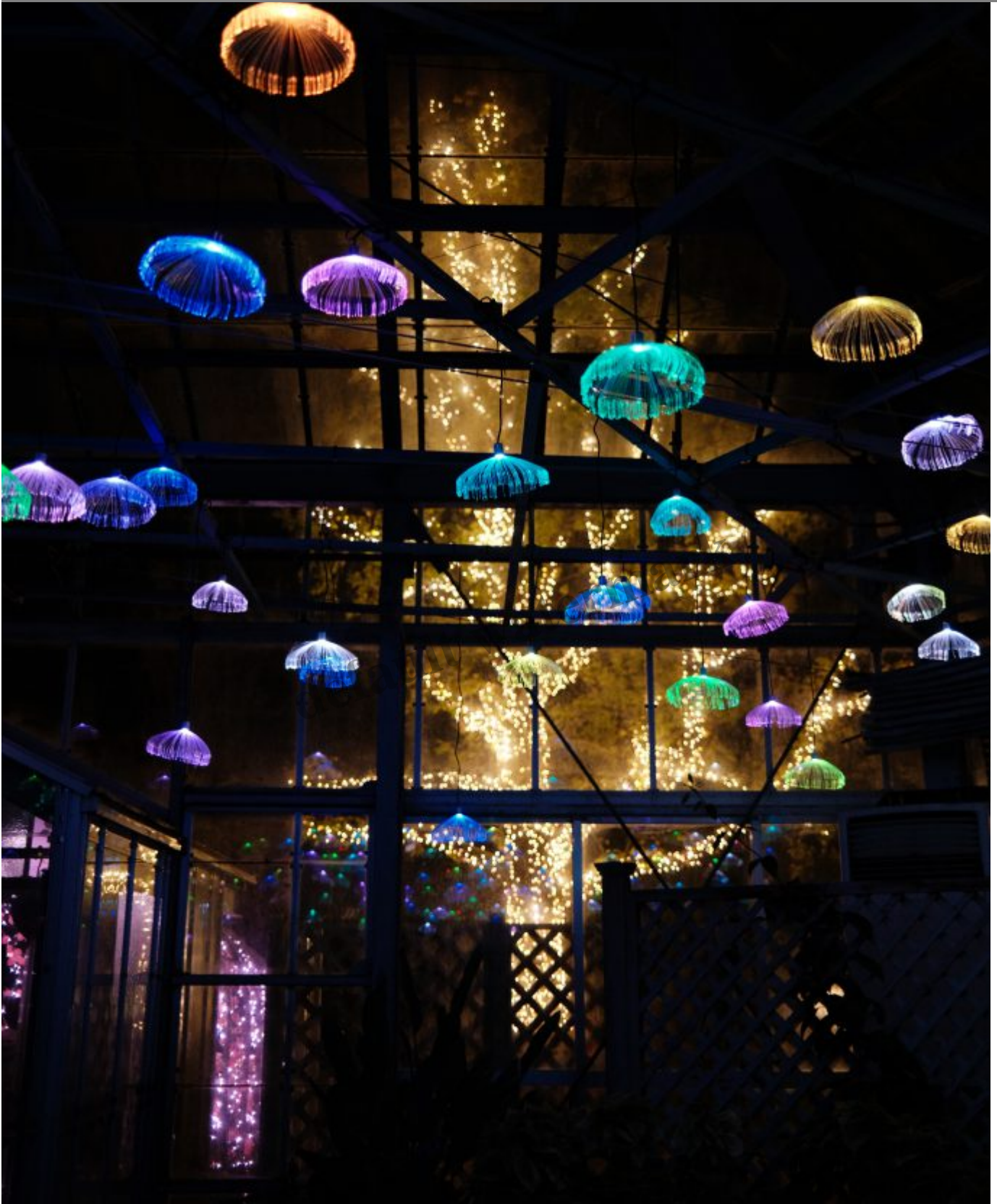








default watermark







The place was magical if only it weren't that cold!

If you are in the area, remember to check your calendar and make plans to visit if possible. (there isn't much to do at night anyway)

The easiest way to get there is to drive. It's like THE event of the season, so most hotels display information about the light-up event and can guide you to the best way to visit.

By the time we hit the hotel, it was about 10 pm. The thing about Japan is that the roads are generally not as well-lit as Singapore, so it took some getting used to.

Click below for day 10!

[Autumn in Japan, Two Weeks Self-Drive Travel Itinerary \(Nagano, Hakone, Izu, Tokyo\) – Day 10](#)

Click below to read about the rest of my trip!

[Autumn in Japan, Two Weeks Self-Drive Travel Itinerary \(Nagano, Hakone, Izu, Tokyo\)](#)

Drop your email here to get your free Nagano Itinerary!

* indicates required

Email Address *Enter a valid email address

Name * _____ How do we address you?

Subscribe

Date Created

11/07/2024

Author

kevinyeo

default watermark